

# Lillehammer



## Lillehammer Materials List

1, 110 gram skein sportweight wool yarn for Main Color (gray is shown)

1, 110 gram skein sportweight wool yarn for Contrast Color 1 (black is shown)

Scrap of sportweight wool yarn for Contrast Color 2 (neon green is shown). Only 3 rows in the hat are knit with this, so about 5 yards should be sufficient

Size 5 US 16" circular needles and size 5 US double pointed needles (or size required to achieve gauge)

Row counter

Stitch markers

Yarn needle

# Lillehammer Step by Step

Size: One

Finished Measurements: 8 3/8" high, 22" circumference

Gauge: 12 sts = 2"; 14 rows = 2" (after blocking)

Abbreviations found at end of pattern.

1. With CC1, CO 136 sts on size 5 US 16" circular needles, placing stitch markers every 17 stitches. Join round.
2. Knit the following rounds:
  - 1-5 - Knit in K1, P1 ribbing, using CC1 for the knit sts and MC for the purl sts.
  - 6 - Knit all sts in CC1.
  - 7-9 - Knit all sts in CC2.
  - 10 - Knit all sts in CC1.
3. Reset row counter and begin working chart. The chart is 17 stitches long, and will be repeated 8 times each round of the hat. Switch to DPNs when circumference of hat requires.
4. After working the chart, knit one round by \*K1, K2TOG\* all stitches. This should leave 14 stitches on the needles.
5. Knit one final round by K2TOG all stitches. This should leave 7 stitches on the needles.
6. Break yarn, thread yarn needle with the end of the yarn and draw the needle through the loops of the remaining stitches. Pull tight, bring to inside of hat and knot.
7. Weave in ends.
8. Block. Colorwork can often cause puckering and bunching of stitches, so blocking the finished hat can smooth out any bumpy areas.

## Abbreviations

CC1 = Contrast Color One

CC2 = Contrast Color Two

CO = Cast on

DPNs = Double pointed needles

K = Knit

K2TOG = Knit two stitches together

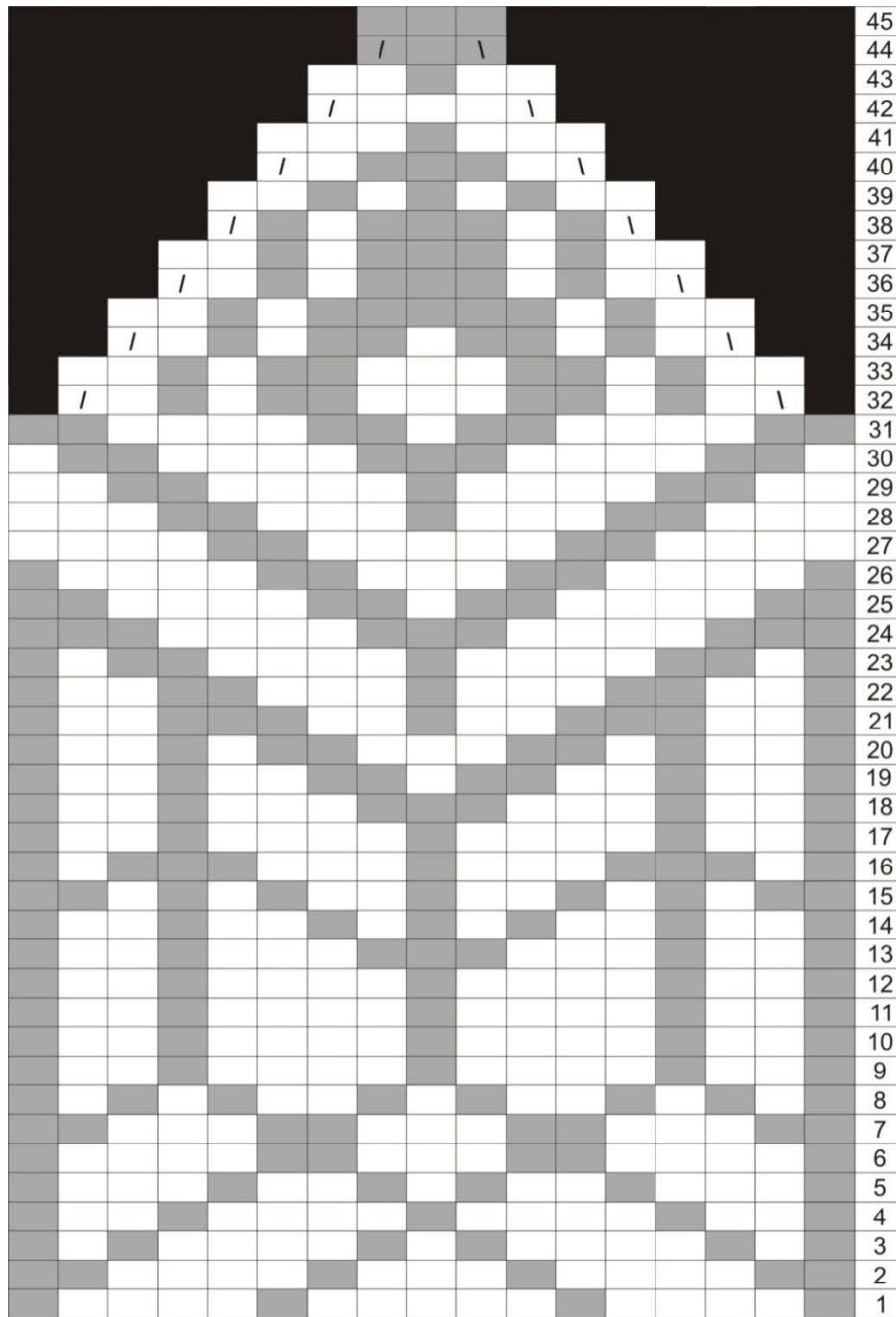
MC = Main Color

P = Purl

SSK = Slip one stitch knitwise, slip the next stitch knitwise, and then knit the two slipped stitches together through the back loops

sts = Stitches

\*...\* = Repeat the instructions inside the stars by however many times the pattern says



White square	Knit, MC
Gray square	Knit, CC 1
Black square	No Stitch
White square with /	SSK, MC
White square with /	SSK, CC 1
White square with \	K2TOG, MC
White square with \	K2TOG, CC 1





This pattern is the copyright of Jacquelynn Vance-Kuss, 2009. Written permission is required to copy and/or distribute copies of the instructions, cover, or back cover, whether or not you profit from it. This pattern allows you to make as many items as you like for your personal use, including to be given as gifts; however, it does not allow you to make items to be sold for profit. Thank you for respecting the designer's copyright.